

---

---

**Information technology — IT  
Enabled Services-Business Process  
Outsourcing (ITES-BPO) lifecycle  
processes —**

**Part 5:  
Guidelines**

*Technologies de l'information — Processus du cycle de vie de la  
délocalisation du processus d'affaires des services activés par IT —  
Partie 5: Lignes directrices*



**COPYRIGHT PROTECTED DOCUMENT**

© ISO/IEC 2016, Published in Switzerland

All rights reserved. Unless otherwise specified, no part of this publication may be reproduced or utilized otherwise in any form or by any means, electronic or mechanical, including photocopying, or posting on the internet or an intranet, without prior written permission. Permission can be requested from either ISO at the address below or ISO's member body in the country of the requester.

ISO copyright office  
Ch. de Blandonnet 8 • CP 401  
CH-1214 Vernier, Geneva, Switzerland  
Tel. +41 22 749 01 11  
Fax +41 22 749 09 47  
copyright@iso.org  
www.iso.org

# Contents

	Page
<b>Foreword</b> .....	<b>iv</b>
<b>Introduction</b> .....	<b>v</b>
<b>1 Scope</b> .....	<b>1</b>
<b>2 Normative references</b> .....	<b>1</b>
<b>3 Terms and definitions</b> .....	<b>1</b>
<b>4 Purpose</b> .....	<b>2</b>
<b>5 ITES-BPO process context</b> .....	<b>3</b>
<b>6 ITES-BPO process structure</b> .....	<b>4</b>
<b>7 Stakeholders and stakeholder value definition</b> .....	<b>8</b>
<b>8 Process reference model</b> .....	<b>10</b>
<b>9 Process assessment model</b> .....	<b>11</b>
<b>10 Framework for assessment of process capability</b> .....	<b>15</b>
10.1 Components of assessment.....	15
10.2 Measurement framework.....	17
<b>11 Organization maturity model</b> .....	<b>19</b>
<b>12 Process capability assessment</b> .....	<b>22</b>
12.1 Process capability initiation.....	22
12.2 Process assessment output.....	22
<b>13 Process risk determination</b> .....	<b>24</b>
13.1 Process risk determination — Introduction.....	24
13.2 Process risk determination — Steps.....	25
13.2.1 Step 1 — Initiate process risk determination.....	25
13.2.2 Step 2 — Set target capability.....	26
13.2.3 Step 3 — Assess current capability.....	26
13.2.4 Step 4 — Determine proposed capability.....	26
13.2.5 Step 5 — Verify proposed capability.....	27
13.2.6 Step 6 — Analyse process related risks and act on results.....	27
<b>14 Process improvement</b> .....	<b>28</b>
14.1 Process improvement — purpose and outcomes.....	28
14.2 Types of process improvement.....	28
14.3 Process improvement programme.....	30
14.3.1 Examine organization’s business goals to set improvement objectives.....	30
14.3.2 Initiate process improvement cycle.....	31
14.3.3 Identify improvement areas.....	32
14.3.4 Analyse assessment strengths and weaknesses.....	32
14.3.5 Review organizational improvement objectives.....	33
14.3.6 Generate and identify improvement areas.....	33
14.3.7 Derive action plan.....	33
14.3.8 Implement improvements.....	34
14.3.9 Monitoring implementation.....	35
14.3.10 Confirm improvements.....	35
14.3.11 Sustain and monitor improvements.....	35
<b>Bibliography</b> .....	<b>37</b>

## Foreword

ISO (the International Organization for Standardization) and IEC (the International Electrotechnical Commission) form the specialized system for worldwide standardization. National bodies that are members of ISO or IEC participate in the development of International Standards through technical committees established by the respective organization to deal with particular fields of technical activity. ISO and IEC technical committees collaborate in fields of mutual interest. Other international organizations, governmental and non-governmental, in liaison with ISO and IEC, also take part in the work. In the field of information technology, ISO and IEC have established a joint technical committee, ISO/IEC JTC 1.

The procedures used to develop this document and those intended for its further maintenance are described in the ISO/IEC Directives, Part 1. In particular the different approval criteria needed for the different types of document should be noted. This document was drafted in accordance with the editorial rules of the ISO/IEC Directives, Part 2 (see [www.iso.org/directives](http://www.iso.org/directives)).

Attention is drawn to the possibility that some of the elements of this document may be the subject of patent rights. ISO and IEC shall not be held responsible for identifying any or all such patent rights. Details of any patent rights identified during the development of the document will be in the Introduction and/or on the ISO list of patent declarations received (see [www.iso.org/patents](http://www.iso.org/patents)).

Any trade name used in this document is information given for the convenience of users and does not constitute an endorsement.

For an explanation on the meaning of ISO specific terms and expressions related to conformity assessment, as well as information about ISO's adherence to the World Trade Organization (WTO) principles in the Technical Barriers to Trade (TBT) see the following URL: [www.iso.org/iso/foreword.html](http://www.iso.org/iso/foreword.html).

The committee responsible for this document is ISO/IEC JTC 1, *Information technology*, Subcommittee SC 40, *IT Service Management and IT Governance*.

A list of all parts in the ISO/IEC 30105 series can be found on the ISO website.

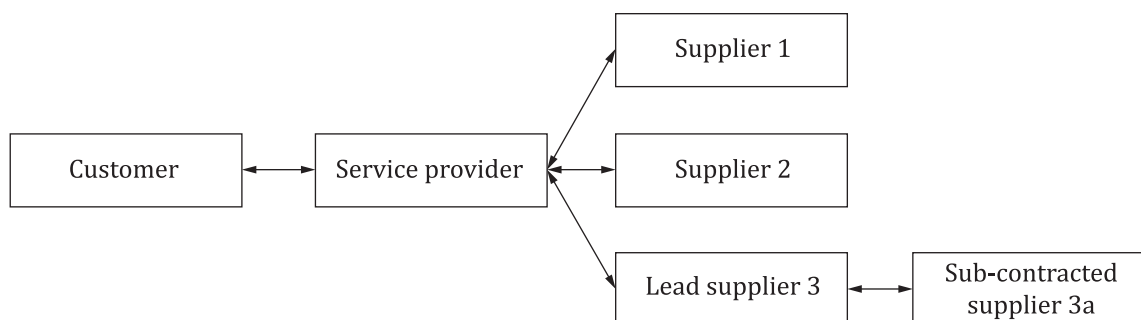
## Introduction

ITES-BPO services encompass the delegation of one or more IT enabled business processes to a service provider who uses appropriate technology to deliver service. Such a service provider manages, delivers, improves and administers the outsourced business processes in accordance with predefined and measurable performance metrics. This covers diverse business process areas such as finance, human resource management, administration, health care, banking and financial services, supply chain management, travel and hospitality, media, market research, analytics, telecommunication, manufacturing, etc. These services provide business solutions to customers across the globe and form part of the core service delivery chain for customers.

ISO/IEC 30105 (all parts) specifies the lifecycle processes requirements involved in the ITES-BPO industry.

- It provides an overarching standard for all aspects of ITES-BPO industry from the view of the service provider that performs the outsourced business processes. This is applicable for any ITES-BPO service provider providing services to customers through contracts and in industry verticals.
- It covers the entire outsourcing lifecycle and defines the processes that are considered to be good practices.
- It is an improvement standard that enables risk determination and improvement for service providers performing outsourced business processes. It also serves as a process reference model for service providers.
- It focuses on IT enabled business processes which are outsourced.
- It is generic and can be applied to all IT enabled business process outsourced services, regardless of type, size and the nature of the services delivered.
- Process improvement implemented using ISO/IEC 30105 (all parts) can lead to clear return on investment for customers and service providers.
- Alignment to ISO/IEC 30105 (all parts) can improve consistency, delivery quality and predictability in delivery of services.

[Figure 1](#) illustrates the key entities and relationships involved in an ITES-BPO service. It includes the customer, the ITES-BPO service provider and various levels of suppliers. This is in line with the supply chain relationship depicted in ISO/IEC 20000-1:2011, 7.2.



**Figure 1 — ITES-BPO key entities**

This document provides guidance to the other parts of ISO/IEC 30105 and the requirements for assessing processes. This document, in such a context, provides guidance on the application of the process assessment model, how to strategically leverage the assessment and then how to use it in the context of an improvement programme for an ITES-BPO organization.

# Information technology — IT Enabled Services-Business Process Outsourcing (ITES-BPO) lifecycle processes —

## Part 5: Guidelines

### 1 Scope

ISO/IEC 30105 specifies the lifecycle process requirements performed by the IT enabled business process outsourcing service provider for the outsourced business processes. It defines the processes to plan, establish, implement, operate, monitor, review, maintain and improve its services. This document:

- covers IT enabled business processes that are outsourced;
- is not intended to cover IT services but includes similar, relevant process for completeness;
- is applicable to the service provider, not to the customer;
- is applicable to all lifecycle processes of ITES-BPO;
- provides guidance on application of the process assessment model, how to strategically leverage the assessment and to use it in the context of an improvement programme or risk assessment for an ITES-BPO service provider organization.

### 2 Normative references

The following documents are referred to in the text in such a way that some or all of their content constitutes requirements of this document. For dated references, only the edition cited applies. For undated references, the latest edition of the referenced document (including any amendments) applies.

ISO/IEC 30105-2:2016, *Information technology — IT Enabled Services-Business Process Outsourcing (ITES-BPO) lifecycle processes — Part 2: Process assessment model (PAM)*

ISO/IEC 30105-3:2016, *Information technology — IT Enabled Services-Business Process Outsourcing (ITES-BPO) lifecycle processes — Part 3: Measurement framework (MF) and organization maturity model (OMM)*

ISO/IEC 33020, *Information technology — Process assessment — Process measurement framework for assessment of process capability*